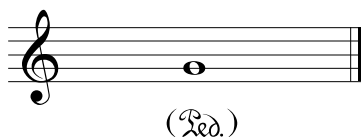


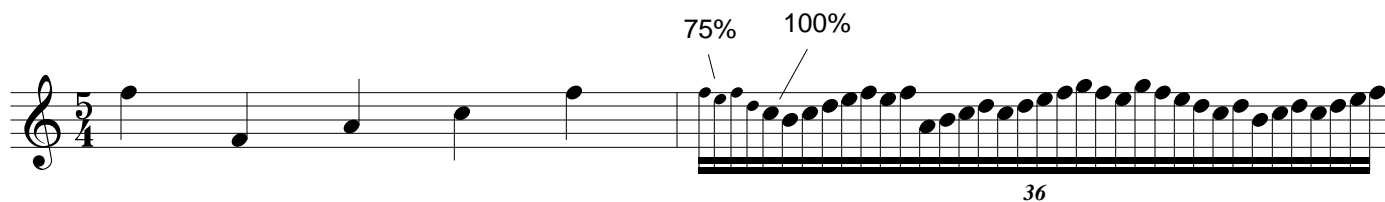
## Exercise 8 - Zoom/Hand Grabber/Resize; Working with Layers

Part I. The Zoom Tool (looks like a magnifying glass with a plus sign in the middle) is useful for accurate placement of performance directions. When you Zoom in on an area of the score you are capable of moving performance indications by very small amounts. This will allow screen characters to line up with very fine precision. Using the Zoom Tool together with the Articulation Tool and Simple Note Entry Tool, enter the following making sure the paranthetical marks are at the same height as the pedal mark (The parenthetical "ped." mark should be entered as three characters). Make sure that the characters do not collide. Hide the time signature and supply a final bar.



Part II. Grab the score and move it around with the hand grabber. You can access the hand grabber momentarily at any time by holding down command+option. This will turn the cursor into the hand grabber regardless of whatever current tool is being employed.

Part III. Resize Tool (the tool with the % sign). You will have to create a seperate file for this example. Resize the following two measure score to 50%. This is done by clicking in the upper left hand corner of the page (be sure you are in Page View). Then resize the NOTE HEADS ONLY to 75% in the second measure by clicking on each notehead. This will allow room for all the notes to exist without colliding.



Part IV. Layers. Some music consists of several lines of music occuring simultaneously on one staff. In such a situation, each line of music should be entered in its own layer. Finale allows for up to four layers of music on a single staff. The four possible layers can be selected by clicking on the Layer Box at the bottom left hand corner of the score window while in Page View. Determine the number of layers necessary to input the following example of guitar music.

